

ANDREW SQUIRE *Pig Portal*  
Oil on panel 20 x 24 inches  
(front cover)

NAEL HANNA  
*Scottish Village*  
Oil on panel 18 x 24 inches

THOMPSON'S  
LONDON

15 New Cavendish Street, London. W1G 9UB Tel: +44 (0)207 935 3595 Email: [enquiries@thompsonsgallery.co.uk](mailto:enquiries@thompsonsgallery.co.uk)

175 High Street, Aldeburgh, Suffolk. IP15 5AN Tel: 01728 453 743 Email: [enquiries@thompsonsgallery.co.uk](mailto:enquiries@thompsonsgallery.co.uk)

[www.thompsonsgallery.com](http://www.thompsonsgallery.com)

THOMPSON'S  
LONDON

# ELEMENTAL

Andrew Squire & Nael Hanna



Squire



NAEL HANNA *Sea Elements*  
Oil on panel 24 x 38 inches



# ELEMENTAL

## Andrew Squire & Nael Hanna

7th – 23rd April 2016

Late Night Opening until 19.30 Wednesday 6th April

THOMPSON'S  
LONDON

15 New Cavendish St  
London, W1G 9UB

Tel: +44 (0)207 935 3595

Email: [enquiries@thompsonsgallery.co.uk](mailto:enquiries@thompsonsgallery.co.uk)

[www.thompsonsgallery.co.uk](http://www.thompsonsgallery.co.uk)

Monday to Friday: 10:00 - 18:00

Saturday: 10:30 - 17:30

Sunday: Closed

The complete exhibition can be viewed online at  
[www.thompsonsgallery.co.uk](http://www.thompsonsgallery.co.uk)

All paintings are for sale upon receipt of the catalogue.

**THOMPSON'S GALLERY** proudly presents 'Elemental', an exhibition of new paintings by Scottish artists Andrew Squire and Nael Hanna. In this show both painters explore ecological topics of animal and human relations and the dynamics of natural and urban environments. Andrew Squire approaches his subjects with clean, controlled lines and flat planes. His environments are geometric and boldly coloured, occupied typically by a silhouetted singular animal. Sharp and angular, the creature's urban surroundings imply its displacement, yet there is humour in the predicament, with coexistence and adaptation at work. In a near opposite painting style, Hanna's expressive brush depicts landscapes in flux between wilderness and civilization, natural and structured. His sprawling seascapes bear active surfaces bursting with life, despite an absence of figures. Similarly, his city views reveal no inhabitants, yet vibrate with colour and movement suggestive of a bustling population. Both artists have strong ties to nature and its wonders, carrying concerns of humanity's place within the bigger picture on this Earth. With styles different and complementary, Squire and Hanna probe and paint their way through the complexities of environment and habitation.

Both Squire and Hanna have travelled, exhibited, and are collected widely across the world. Andrew Squire graduated from Manchester University School of Architecture and has successfully exhibited throughout Europe and the UK, completing residencies in Iceland (1995, Akureyri Arts Centre), Canada (2001, Pouch Cove Foundation), and Nepal (2002, Siddhartha Art Gallery). Across his journeys Squire has explored in his subjects the concepts of coexistence and ecological balance through a style influenced by Zen minimalism, Modernist abstraction, and early cave painting. Nael Hanna comes from a military background, having served in the Iran-Iraq war. Throughout and after his service, Hanna pursued his artistic interests through art scholarships in Baghdad, Duncan of Jordanstone College of Art in Dundee, Hospitalfield Summer School, and Florence.

## Andrew Squire

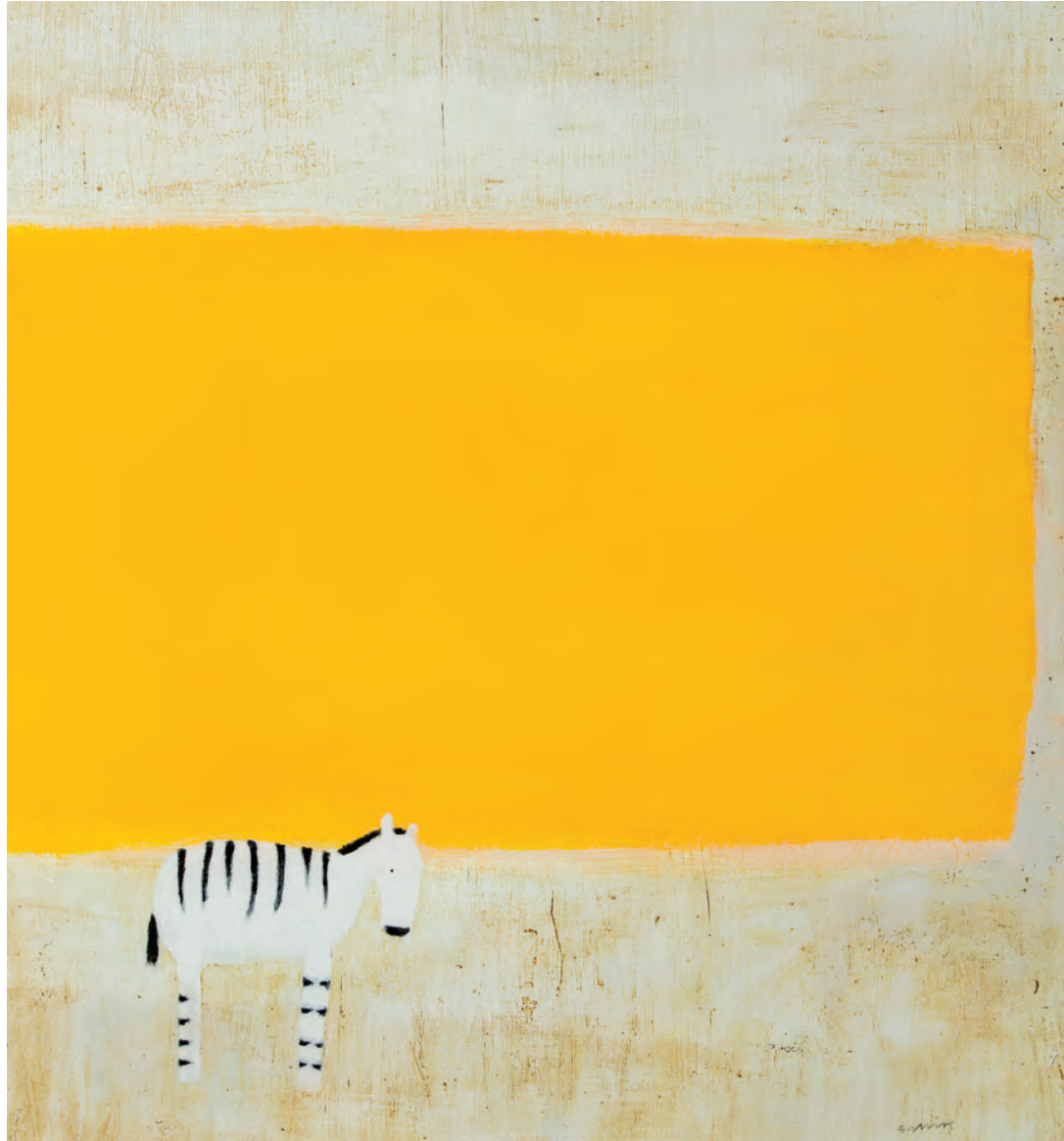


*Fox and Magenta* Oil on panel 12 x 12 inches



*Crow on Black and White* Oil on panel 12 x 12 inches





*Zebra* Oil on panel 20 x 20 inches (left)



*Cat on a Table* Oil on panel 20 x 24 inches (above)



*Perched Owl* Oil on panel 20 x 24 inches (above)

*Bird on Blue* Oil on canvas 35 x 35 inches (right)







*Owl* Oil on panel 12 x 12 inches (above)



*Swan* Oil on panel 10 x 10 inches (above right)



*Leaping Hare* Oil on panel 20 x 24 inches



*Chair with Dove* Oil on panel 20 x 24 inches

*Hare on Bed* Oil on canvas 35 x 35 inches







*Roof Garden* Oil on panel 20 x 24 inches



*Three Starlings* Oil on panel 20 x 24 inches



# Nael Hanna



*Venice* Oil on panel 20 x 30 inches (above)

*Moonlight Over Skye* Oil on panel 39 x 39 inches (right)







*Flowers* Oil on panel 30 x 30 inches

*Florence* Oil on panel 39 x 55 inches (right)







*St. Marcos, Venice* Oil on panel 39 x 39 inches



*Jerusalem Now* Oil on panel 40 x 48 inches





*Ben Nevis* Oil on panel 39 x 39 inches (front cover)



*Washed Creels West Coast Scotland* Oil on panel 43 x 55 inches





*St. Monans* Oil on panel 12 x 12 inches (above)



*Scottish Shore* Oil on panel 40 x 48 inches (right)



*Lobster Creels* Oil on panel 34 x 38 inches